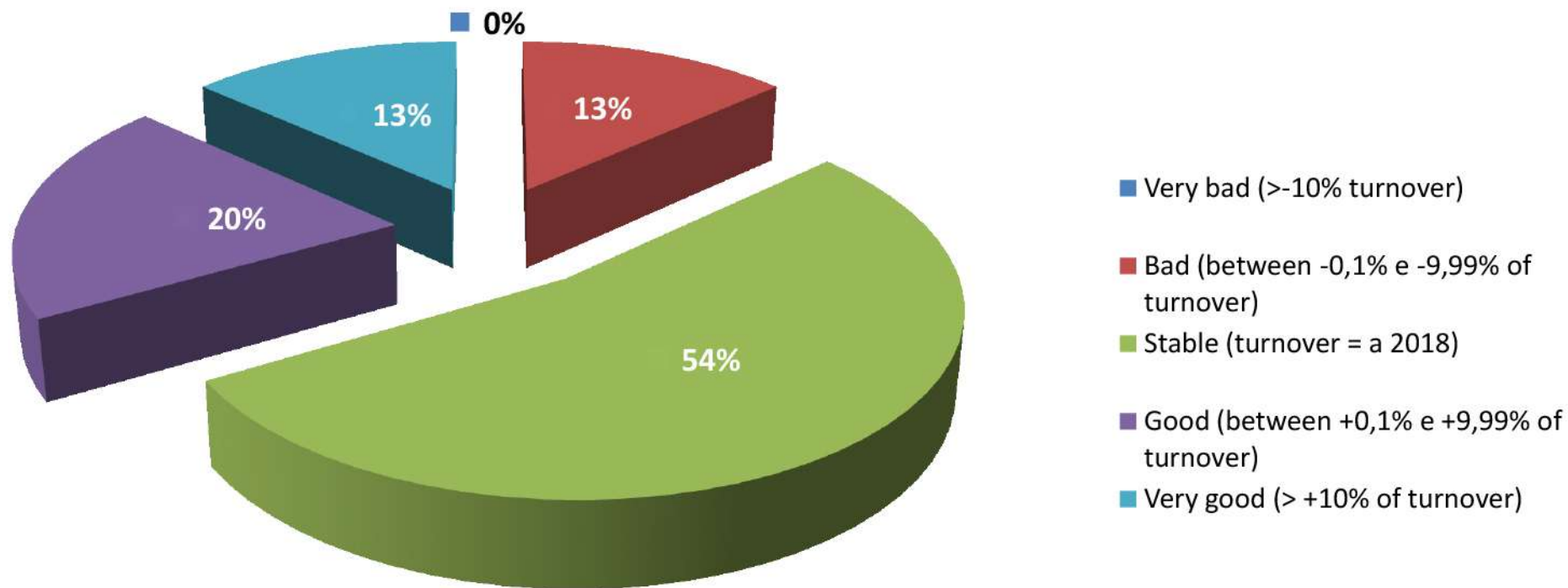


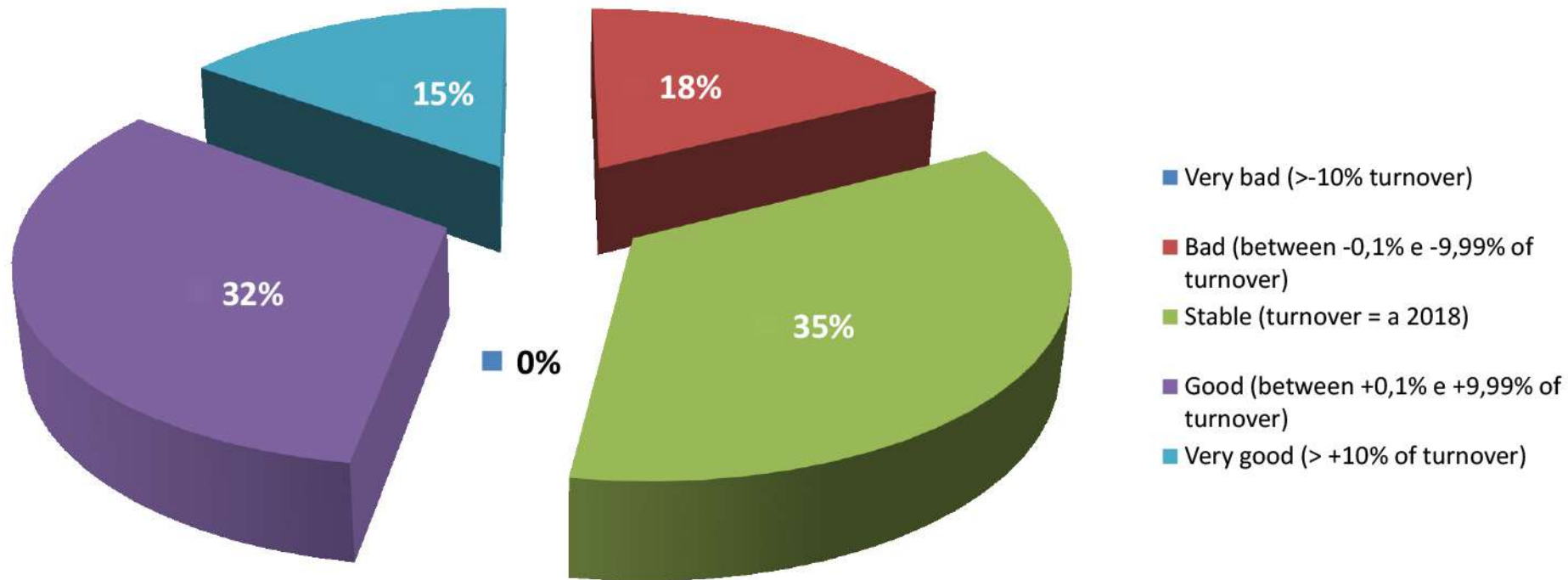
Graph 1 - Italian Exhibitors

How do you evaluate the closure of the 2019 turnover for your company?



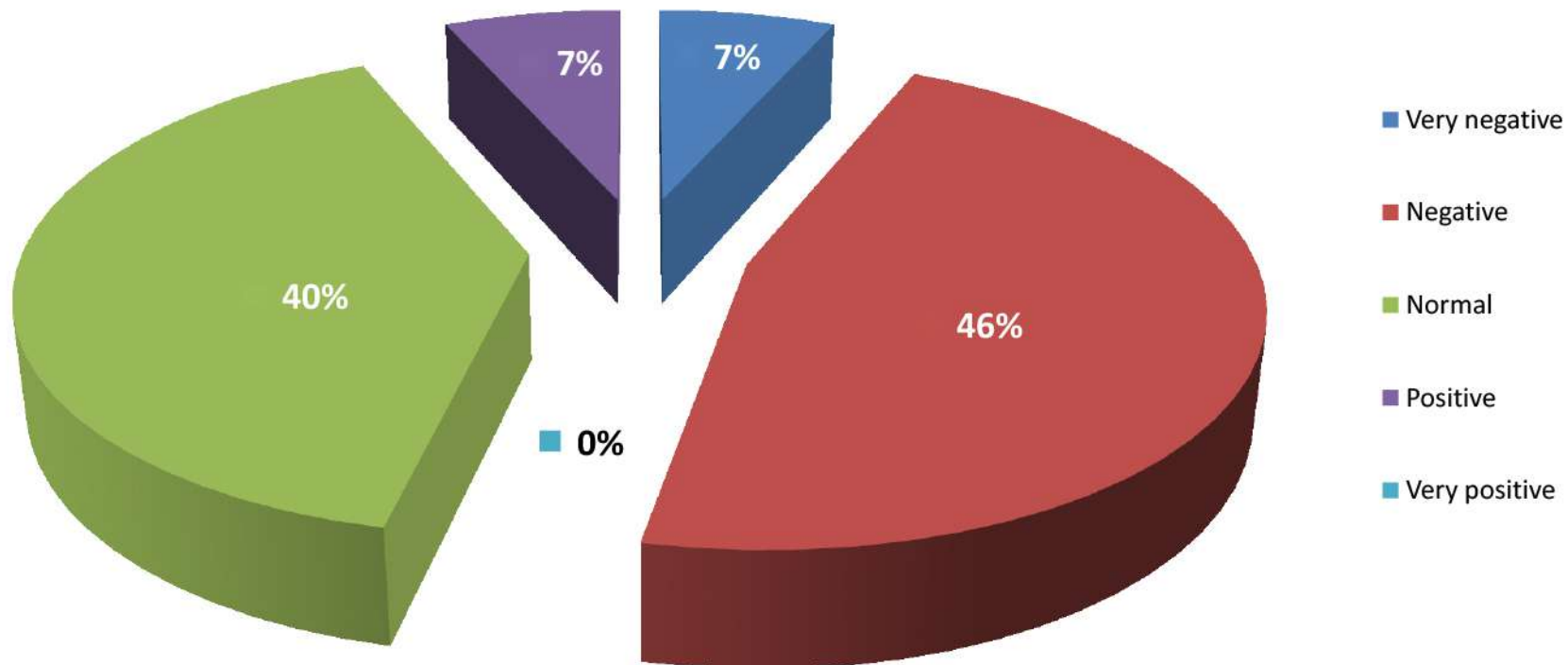
Graph 1A - Foreign Exhibitors

How do you evaluate the closure of the 2019 turnover for your company?



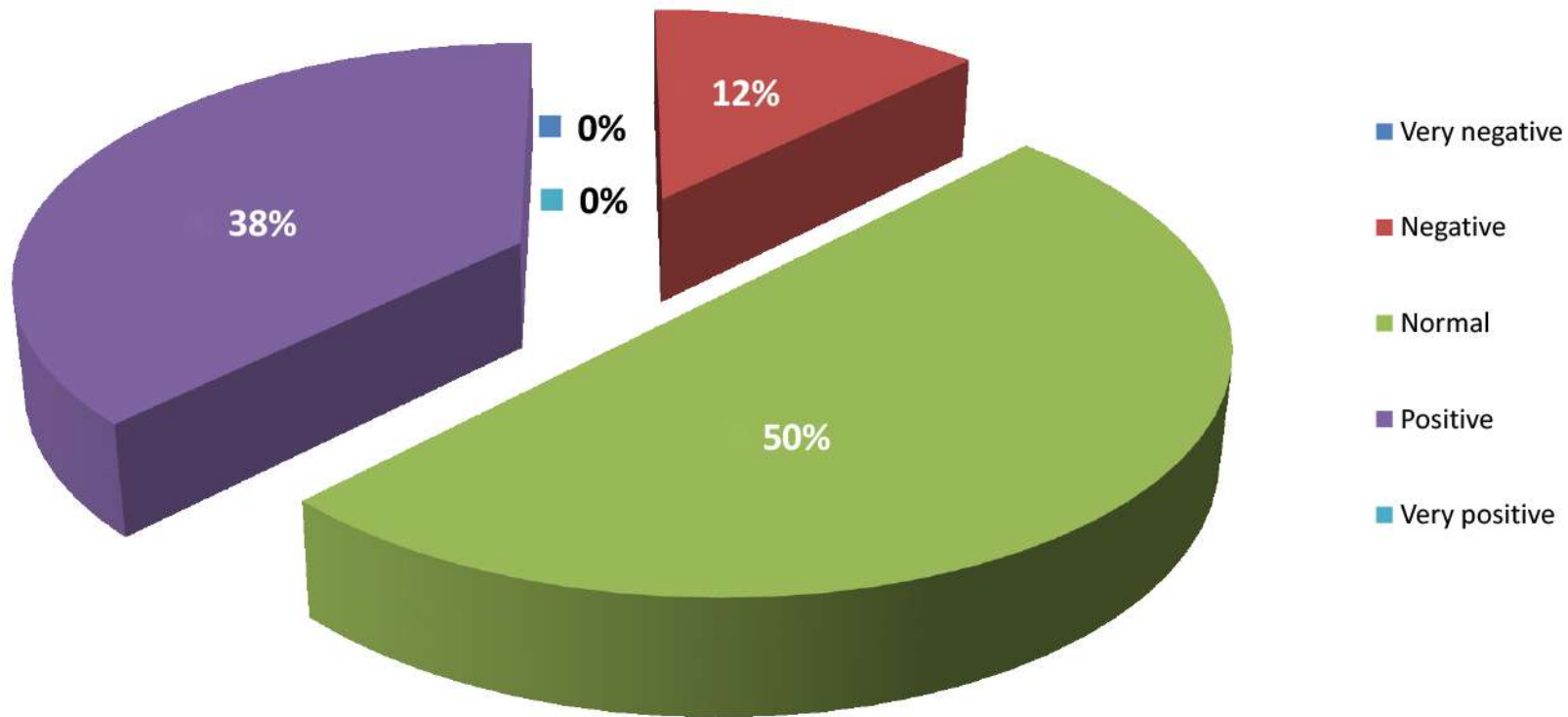
Graph 2 - Italian Exhibitors

What are your first sensations for 2020 after the January fairs?



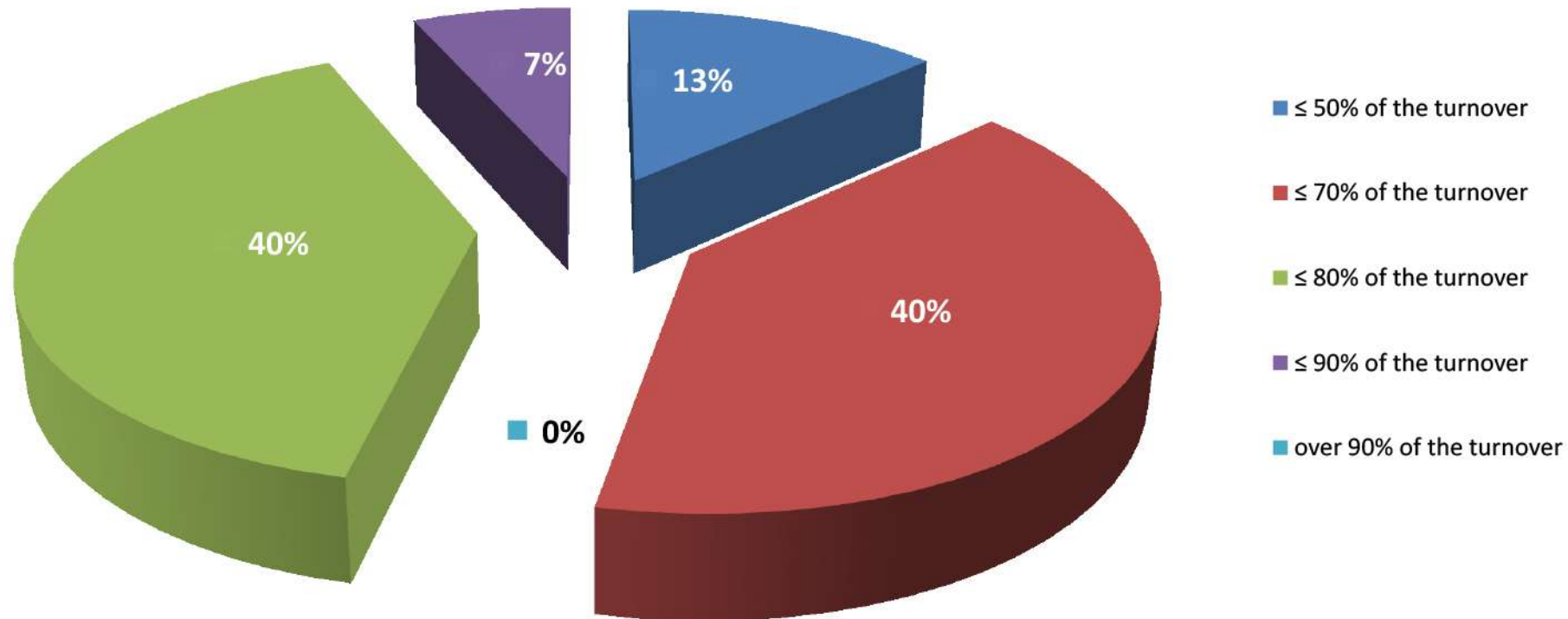
Graph 2A - Foreign Exhibitors

What are your first sensations for 2020 after the January fairs?

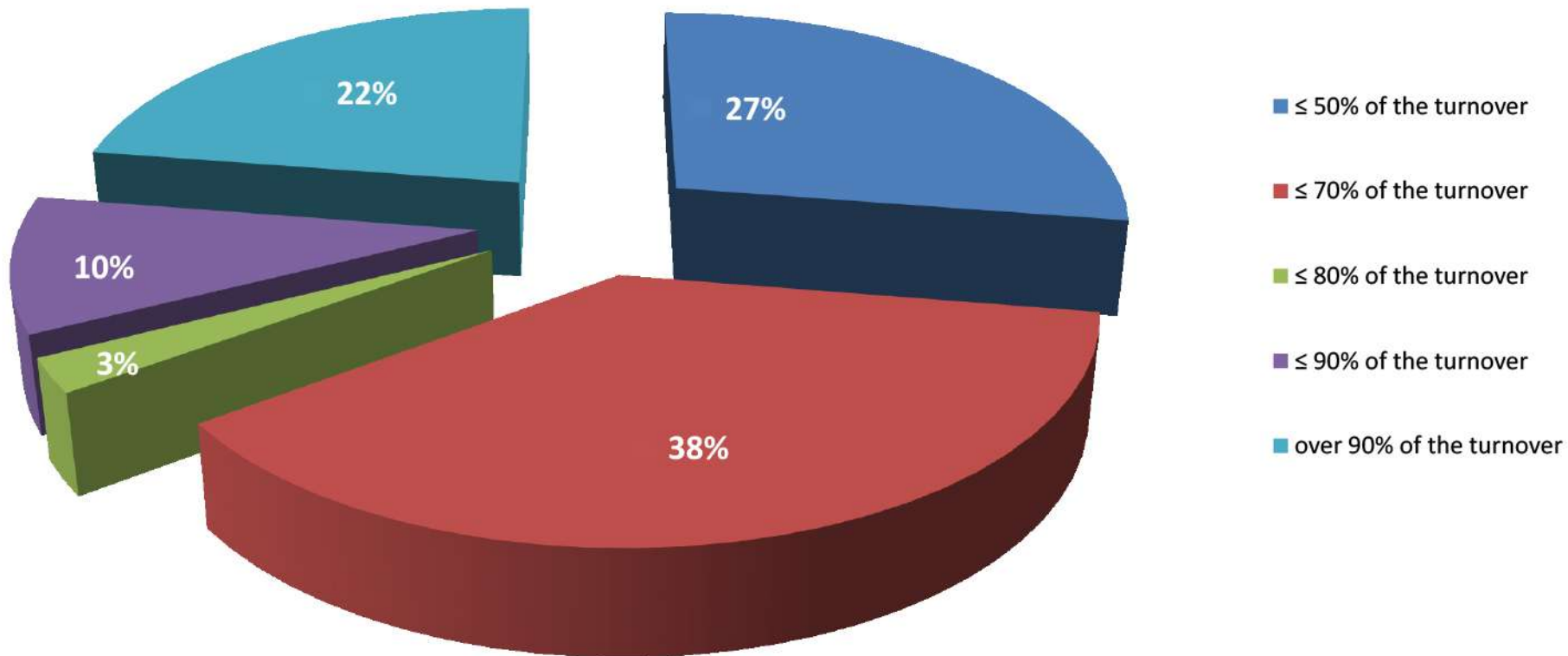


Graph 3 - Italian Exhibitors

What is the export share of your total turnover?

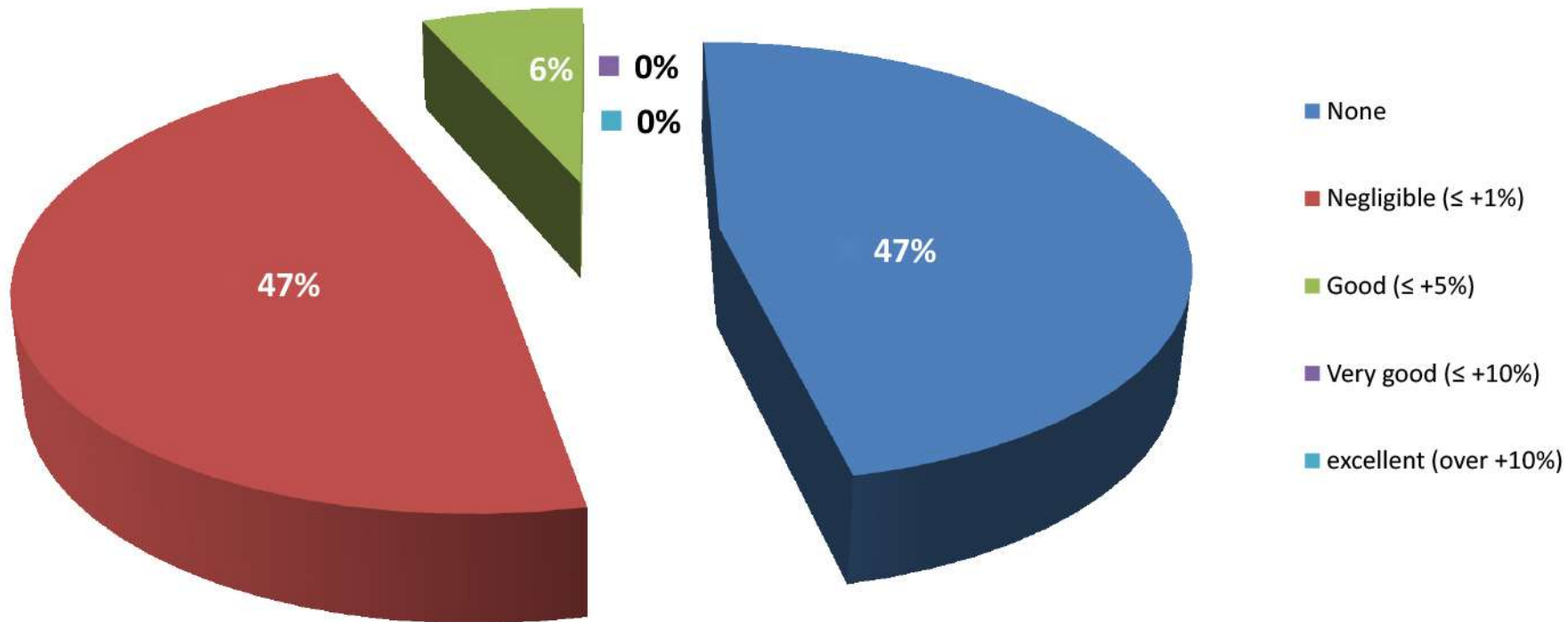


Graph 3A - Foreign Exhibitors
What is the export share of your total turnover?



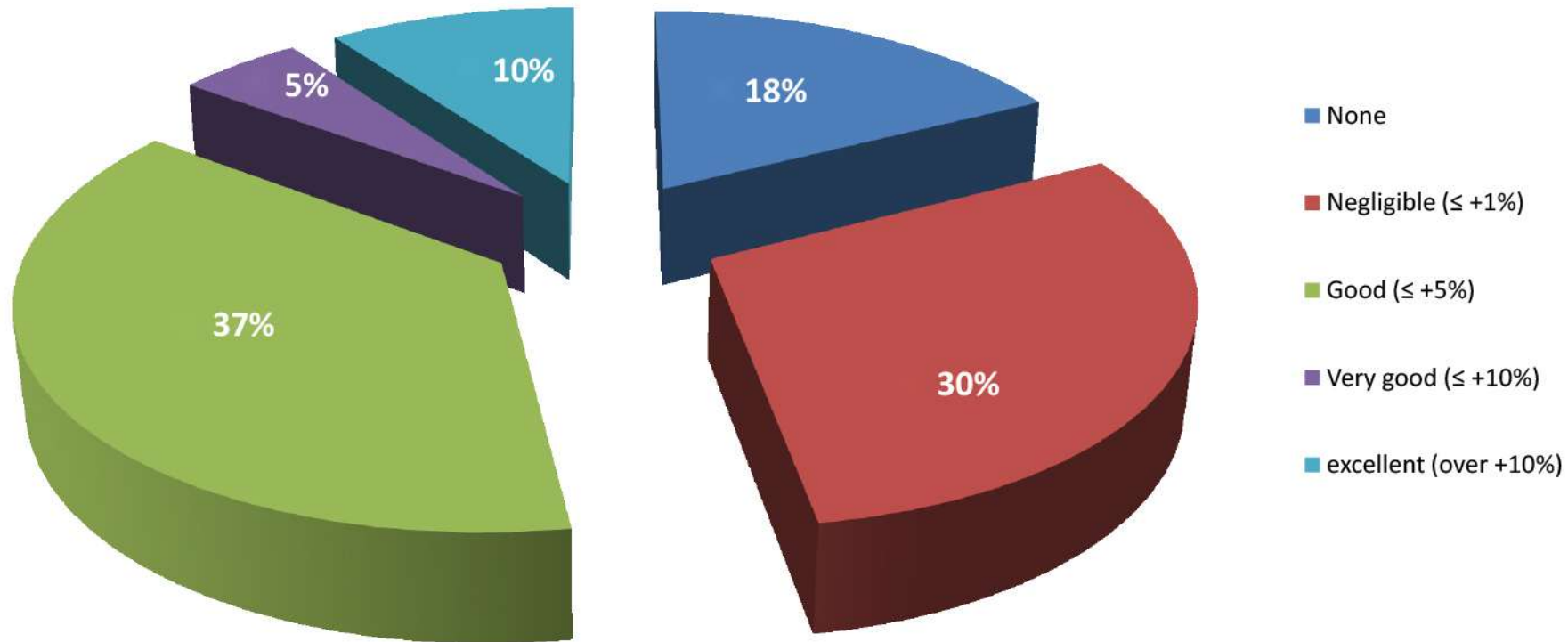
Graph 4 - Italian Exhibitors

What was the change in your export share in 2019?



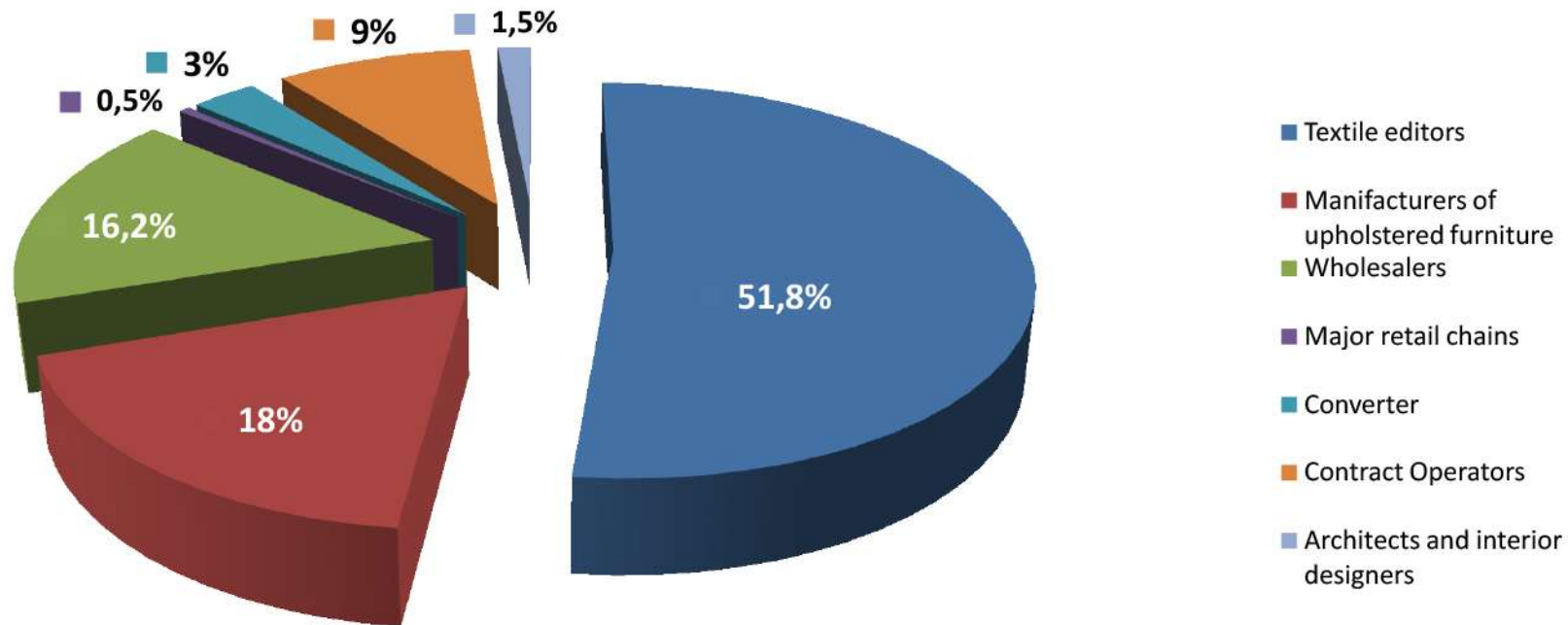
Graph 4A - Foreign Exhibitors

What was the change in your export share in 2019?



Graph 5 - Italian Exhibitors

How is your clientele composed? - mathematical means on each item



Textile Editors: customers of **100%** of respondents

Man. of uphol. furniture: customers of **53,3%** of respondents

Wholesalers: customers of **86,6%** of respondents

Major retail chains: customers of **13,3%** of respondents

Converter: customers of **26,6%** of respondents

Contract Operators: customers of **53,3%** of respondents

Architects and interior designers: customers of **20%** of respondents

% of total respondents = 51,8%

% of total respondents = 18%

% of total respondents = 16,2%

% of total respondents = 0,5%

% of total respondents = 3%

% of total respondents = 9%

% of total respondents = 1,5%

range 10 → 85%

range 20 → 60%

range 3 → 60%

range 2 → 5%

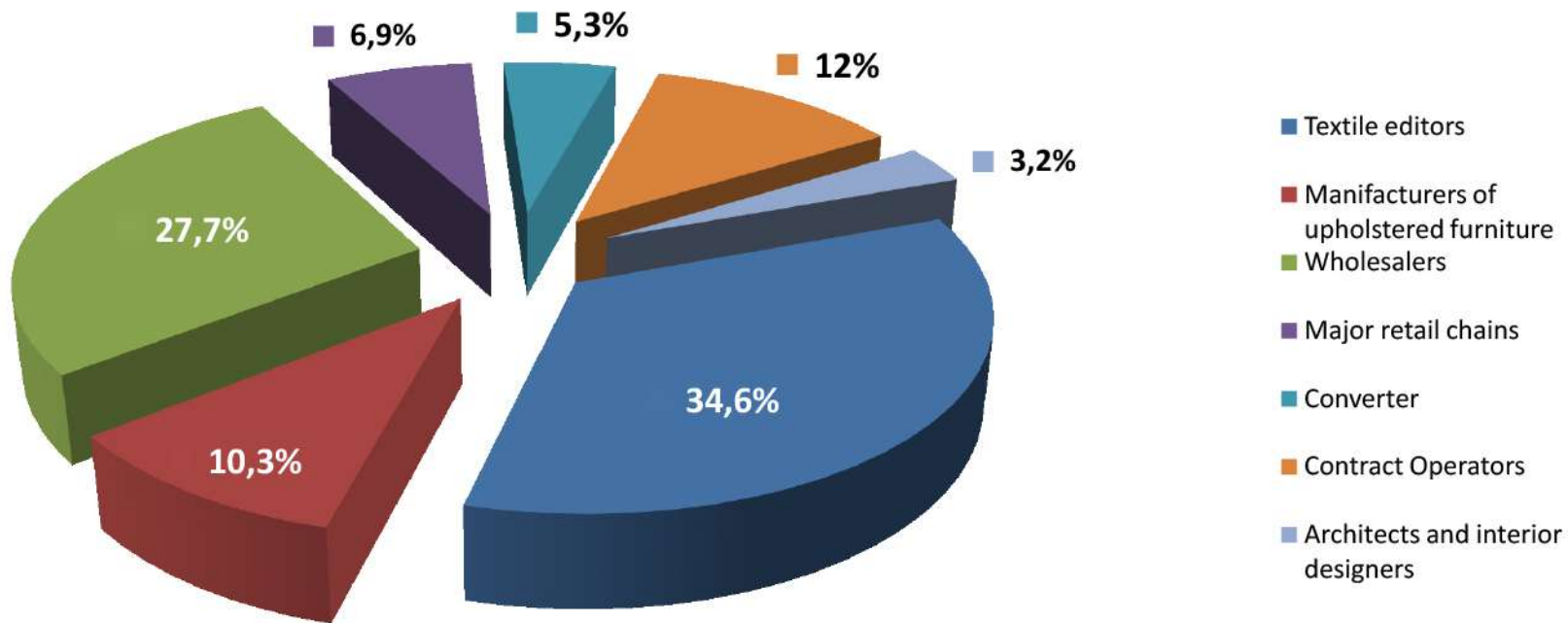
range 5 → 20%

range 5 → 30%

range 5 → 10%

Graph 5A - Foreign Exhibitors

How is your clientele composed? - mathematical means on each item



Textile Editors: customers of **97,4%** of respondents

Man. of uphol. furniture: customers of **66,8%** of respondents

Wholesalers: customers of **89,7%** of respondents

Major retail chains: customers of **46,1%** of respondents

Converter: customers of **41%** of respondents

Contract Operators: customers of **56,4%** of respondents

Architects and interior designers: customers of **41%** of respondents

% of total respondents = 34,6%

% of total respondents = 10,3%

% of total respondents = 27,7%

% of total respondents = 6,9%

% of total respondents = 5,3%

% of total respondents = 12%

% of total respondents = 3,2%

range 5 → 90%

range 2 → 50%

range 3 → 80%

range 2 → 50%

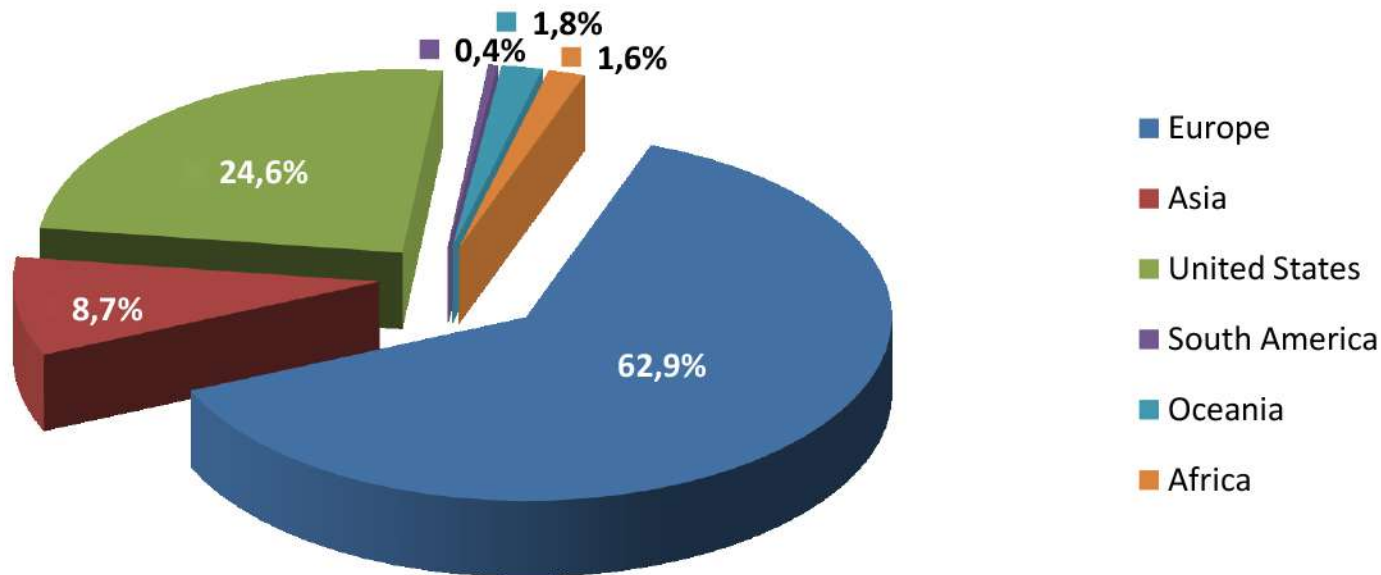
range 5 → 33%

range 5 → 75%

range 1 → 20%

Graph 6 - Italian Exhibitors

What are the geographic areas of greatest activity for your export?



Europa: market of 100% of respondents

Asia: market of 86,6% of respondents

United States: market of 100% of respondents

South America: market of 13,3% of respondents

Oceania: market of 46,6% of respondents

Africa: market of 20% of respondents

% of the total of respondents = 62,9%

% of the total of respondents = 8,7%

% of the total of respondents = 24,6%

% of the total of respondents = 0,4%

% of the total of respondents = 1,8%

% of the total of respondents = 1,6%

range 11 → 90%

range 2 → 28%

range 5 → 61%

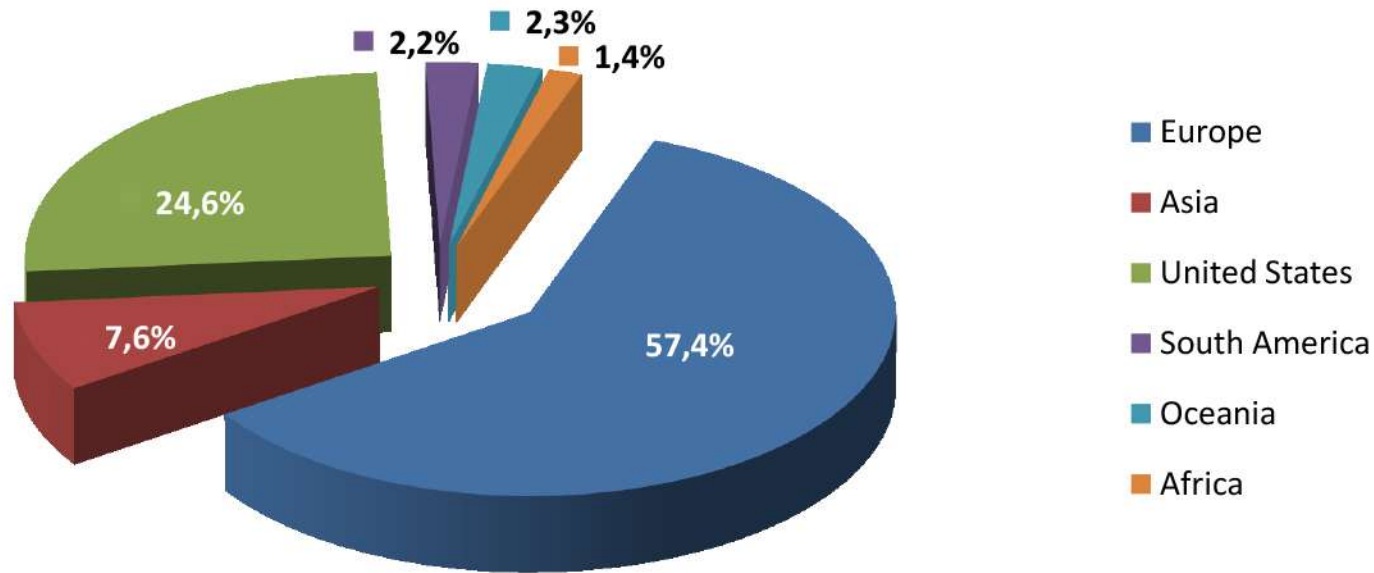
range 3 → 3%

range 1 → 10%

range 1 → 20%

Graph 6A - Foreign Exhibitors

What are the geographic areas of greatest activity for your export?



Europa: market of 100% of respondents

Asia: market of 72,5% of respondents

United States: market of 90% of respondents

South America: market of 32,5% of respondents

Oceania: market of 37,5% of respondents

Africa: market of 32,5% of respondents

% of the total of respondents = 57,4%

% of the total of respondents = 7,6%

% of the total of respondents = 29,1%

% of the total of respondents = 2,2%

% of the total of respondents = 2,3%

% of the total of respondents = 1,4%

range 5 → 95%

range 1 → 40%

range 2 → 95%

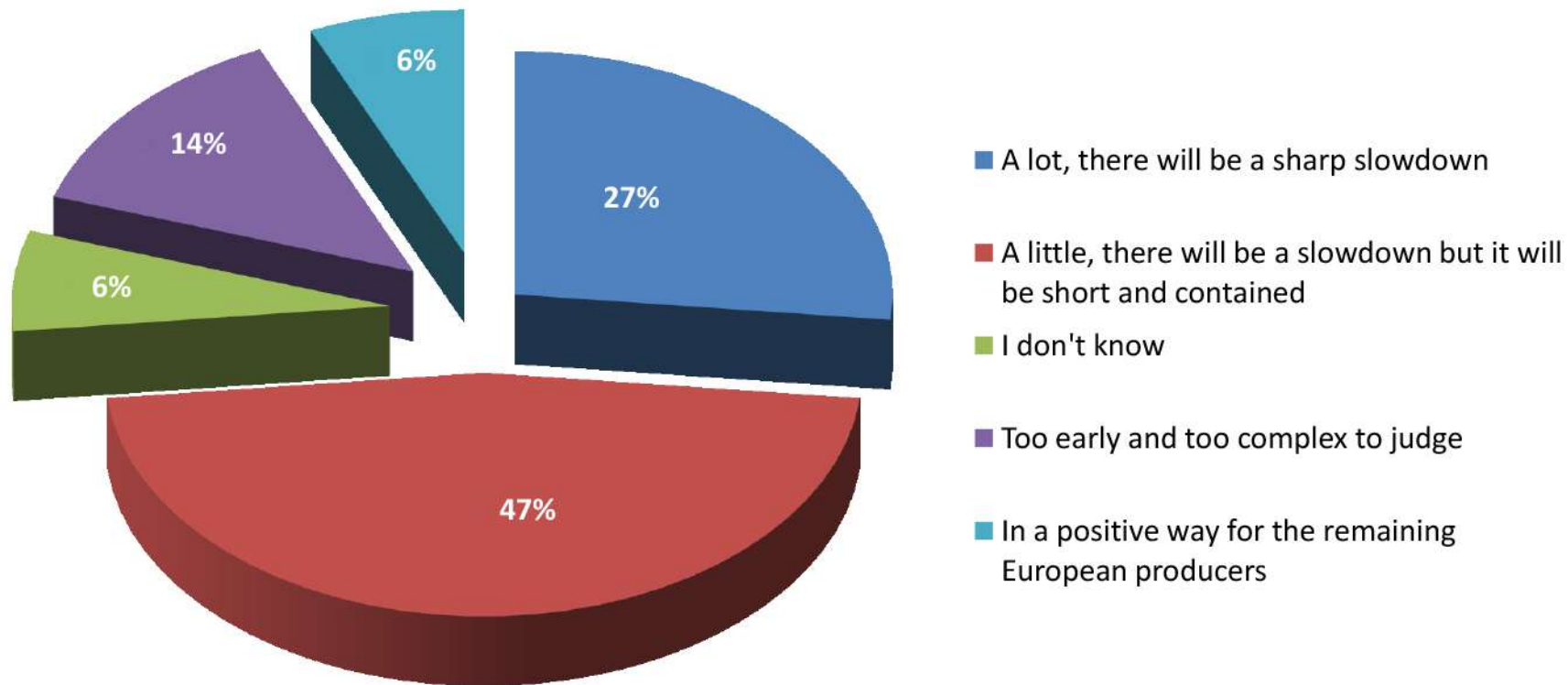
range 1 → 20%

range 1 → 15%

range 1 → 10%

Graph 7 - Italian Exhibitors

In your opinion, how much the recent events related to the Coronavirus epidemic will affect the sector's world economy?



Graph 7A - Foreign Exhibitors

In your opinion, how much the recent events related to the Coronavirus epidemic will affect the sector's world economy?

